

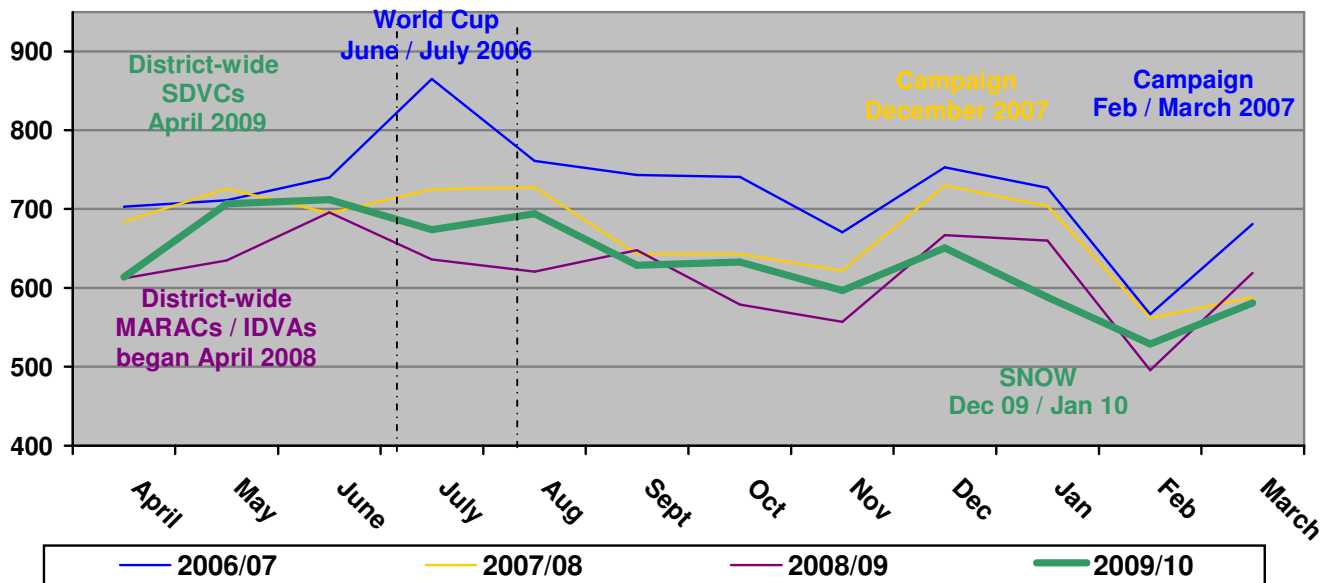
## Domestic Abuse Monitoring Project Report for DAP 9<sup>th</sup> June 2010

This report provides analysis of police domestic violence data for the financial year beginning 1<sup>st</sup> April 2009 to end March 2010.

**Table 1: Bradford District Domestic Abuse Incidents Reported to the Police by Month**

	2006/07	2007/08	Change 06/07 to 07/08	2008/09	Change 07/08 to 08/09	2009/10	Change 08/09 to 2009/10
April	703	684	↓ 19	612	↓ 72	614	↑ 2
May	711	726	↑ 15	635	↓ 91	707	↑ 72
June	740	695	↓ 45	696	↑ 1	712	↑ 16
<b>1<sup>st</sup> quarter</b>	<b>2,154</b>	<b>2,105</b>	<b>↓ 49</b>	<b>1,943</b>	<b>↓ 162</b>	<b>2,033</b>	<b>↑ 90</b>
July	865	725	↓ 140	636	↓ 89	674	↑ 38
August	761	728	↓ 33	621	↓ 107	694	↑ 73
September	743	643	↓ 100	648	↑ 5	629	↓ 19
<b>2<sup>nd</sup> quarter</b>	<b>2,369</b>	<b>2,096</b>	<b>↓ 273</b>	<b>1,905</b>	<b>↓ 191</b>	<b>1,997</b>	<b>↑ 92</b>
October	741	643	↓ 98	579	↓ 64	633	↑ 54
November	671	622	↓ 49	557	↓ 65	597	↑ 40
December	753	730	↓ 23	667	↓ 63	651	↓ 16
<b>3<sup>rd</sup> quarter</b>	<b>2,165</b>	<b>1,995</b>	<b>↓ 170</b>	<b>1,803</b>	<b>↓ 192</b>	<b>1,881</b>	<b>↑ 78</b>
January	727	704	↓ 23	660	↓ 44	588	↓ 72
February	567	562	↓ 5	496	↓ 66	529	↑ 33
March	681	588	↓ 93	619	↑ 31	581	↓ 38
<b>4<sup>th</sup> quarter</b>	<b>1,975</b>	<b>1,854</b>	<b>↓ 121</b>	<b>1,775</b>	<b>↓ 79</b>	<b>1,698</b>	<b>↓ 77</b>
<b>Yearly Total</b>	<b>8,663</b>	<b>8,050</b>	<b>↓ 613</b>	<b>7,426</b>	<b>↓ 624</b>	<b>7,609</b>	<b>↑ 183</b>

**Figure 1: Reported Domestic Abuse Incidents by Year**



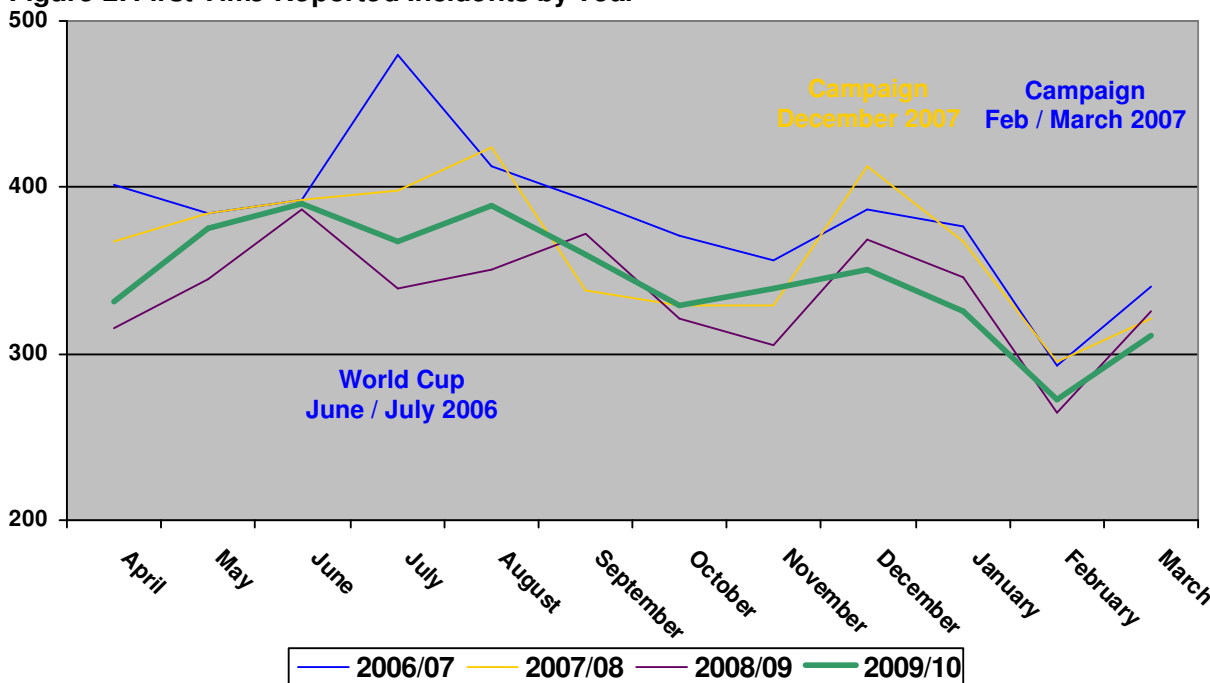
There were a total of 8,663 domestic violence incidents reported to Bradford police during 2006/07. Between 2006/07 and 2008/09 there was a decrease in reporting of domestic violence incidents to Bradford police (8,050 and 7,426 respectively). However, during 2009/10 this trend has changed, with 7,609 incidents reported to the police; an increase of 183 incidents reported to the police compared with the same period in 2008/09.

**Table 2: Bradford District Domestic Abuse First Time Incidents Reported to the Police by Month**

	2006/07	2007/08	Change 06/07 to 07/08	2008/09	Change 07/08 to 08/09	2009/10	Change 08/09 to 2009/10
April	402	368	↓ 34	316	↓ 52	331	↑ 15
May	385	384	↓ 1	345	↓ 39	375	↑ 30
June	393	393	→	387	↓ 6	390	↑ 3
<b>1<sup>st</sup> qtr</b>	<b>1180</b>	<b>1145</b>	<b>↓ 35</b>	<b>1,048</b>	<b>↓ 97</b>	<b>1,096</b>	<b>↑ 48</b>
July	480	398	↓ 82	339	↓ 59	367	↑ 28
August	413	424	↑ 11	351	↓ 73	389	↑ 38
September	393	338	↓ 55	372	↑ 34	360	↓ 12
<b>2<sup>nd</sup> qtr</b>	<b>1286</b>	<b>1160</b>	<b>↓ 126</b>	<b>1,062</b>	<b>↓ 98</b>	<b>1,116</b>	<b>↑ 54</b>
October	371	329	↓ 42	321	↓ 8	329	↑ 8
November	356	329	↓ 27	305	↓ 24	339	↑ 34
December	387	413	↑ 26	369	↓ 44	351	↓ 18
<b>3<sup>rd</sup> qtr</b>	<b>1114</b>	<b>1071</b>	<b>↓ 43</b>	<b>995</b>	<b>↓ 76</b>	<b>1,019</b>	<b>↑ 24</b>
January	377	368	↓ 9	346	↓ 22	326	↓ 20
February	293	295	↑ 2	264	↓ 31	272	↑ 8
March	340	321	↓ 19	326	↑ 5	311	↓ 15
<b>4<sup>th</sup> qtr</b>	<b>1010</b>	<b>984</b>	<b>↓ 26</b>	<b>936</b>	<b>↓ 48</b>	<b>909</b>	<b>↓ 27</b>
<b>Yearly Total</b>	<b>4,590</b>	<b>4,360</b>	<b>↓ 230</b>	<b>4,041</b>	<b>↓ 319</b>	<b>3,231</b>	<b>↑ 126</b>

During 2009/10 the number of first time reports has increased by 126 incidents compared to the previous 12-month period

**Figure 2: First Time Reported Incidents by Year**



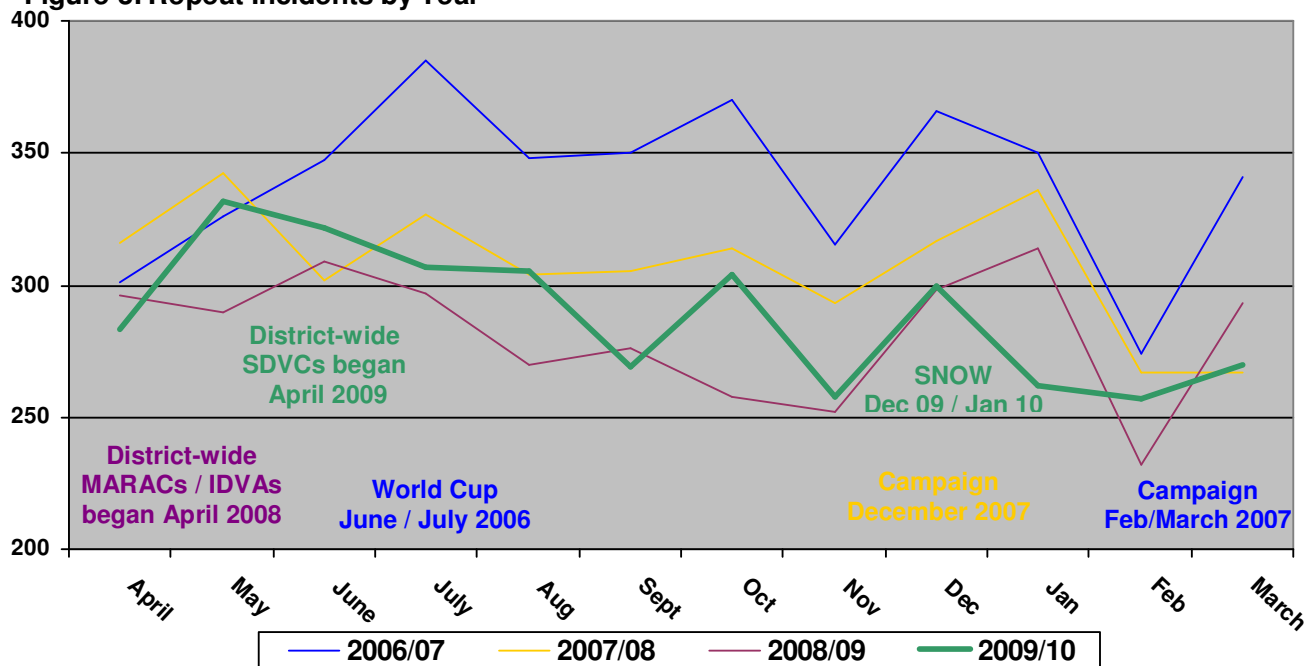
There was an increase in the number of domestic violence incidents reported to the police during the period of the World Cup 2006. A significant number of these were first time reported incidents.

**Table 3: Bradford District Domestic Abuse Repeat Incidents Reported to the Police by Month**

	2006/07	2007/08	Change 06/07 to 07/08	2008/09	Change 07/08 to 08/09	2009/10	Change 08/09 to 2009/10
April	301	316	↑ 15	296	↓ 20	283	↓ 13
May	326	342	↑ 16	290	↓ 52	332	↑ 42
June	347	302	↓ 45	309	↑ 7	322	↑ 13
<b>1<sup>st</sup> qtr</b>	<b>974</b>	<b>960</b>	↓ 14	<b>895</b>	↓ 65	<b>937</b>	↑ 42
July	385	327	↓ 58	297	↓ 30	307	↑ 10
August	348	304	↓ 44	270	↓ 34	305	↑ 35
September	350	305	↓ 45	276	↓ 29	269	↓ 7
<b>2<sup>nd</sup> qtr</b>	<b>1,083</b>	<b>936</b>	↓ 147	<b>843</b>	↓ 93	<b>881</b>	↑ 38
October	370	314	↓ 56	258	↓ 56	304	↑ 46
November	315	293	↓ 22	252	↓ 41	258	↑ 6
December	366	317	↓ 49	298	↓ 19	300	↑ 2
<b>3<sup>rd</sup> qtr</b>	<b>1,051</b>	<b>924</b>	↓ 127	<b>808</b>	↓ 116	<b>862</b>	↑ 54
January	350	336	↓ 14	314	↓ 22	262	↓ 52
February	274	267	↓ 7	232	↓ 35	257	↑ 25
March	341	267	↓ 74	293	↑ 26	270	↓ 23
<b>4<sup>th</sup> qtr</b>	<b>965</b>	<b>870</b>	↓ 95	<b>839</b>	↓ 31	<b>789</b>	↓ 50
<b>Yearly Total</b>	<b>4,073</b>	<b>3,690</b>	↓ 383	<b>3,385</b>	↓ 305	<b>3,469</b>	↑ 84

During 2009/10 there were 84 more repeat incidents than during the previous 12 months. However with an increase of 183 overall, this is to be expected.

**Figure 3: Repeat Incidents by Year**



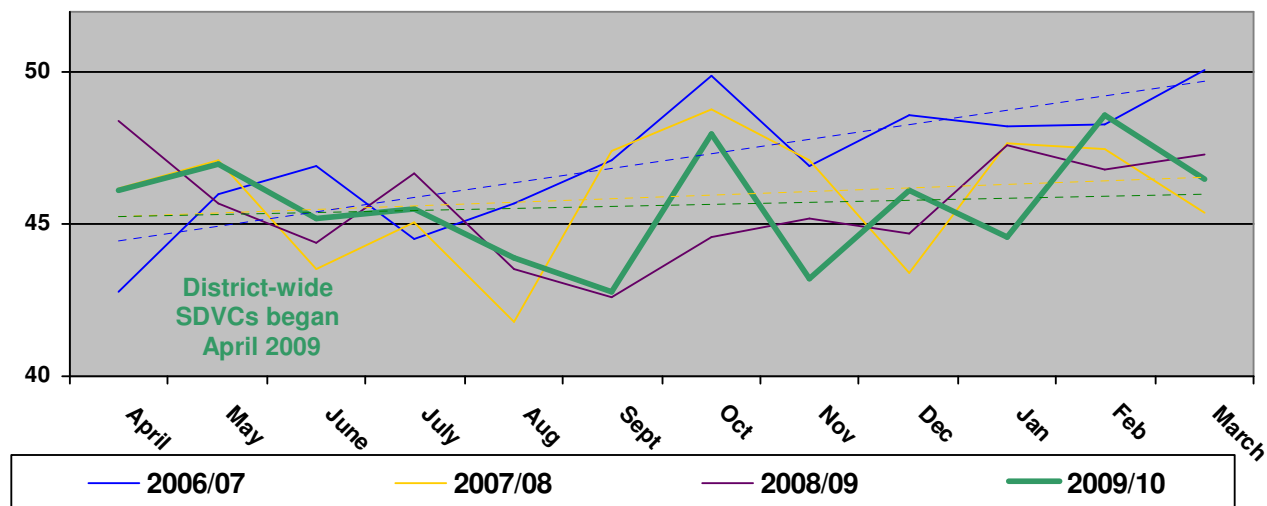
As there is to be a football World Cup during June and July 2010, it is anticipated that there will be an increase in the number of domestic violence incidents reported to the police during this period; although a campaign is to be run throughout the district aimed at potential perpetrators in order to prevent them from committing domestic violence.

**Table 4: Bradford District Domestic Repeat Incident Rate of Incidents Reported to the Police by Month (% of repeats to overall incidents)**

	2006/07	2007/08	Change 06/07 to 07/08	2008/09	Change 07/08 to 08/09	2009/10	Change 08/09 to 2009/10
April	42.8	46.2	↑	48.4	↑	46.1	↓
May	46.0	47.1	↑	45.7	↓	47.0	↑
June	46.9	43.5	↓	44.4	↑	45.2	↑
<b>1<sup>st</sup> qtr</b>							
July	44.5	45.1	↑	46.7	↑	45.5	↓
August	45.7	41.8	↓	43.5	↑	43.9	↑
September	47.1	47.4	↑	42.6	↓	42.8	↑
<b>2<sup>nd</sup> qtr</b>							
October	49.9	48.8	↓	44.6	↓	48.0	↑
November	46.9	47.1	↑	45.2	↓	43.2	↓
December	48.6	43.4	↓	44.7	↑	46.1	↑
<b>3<sup>rd</sup> qtr</b>							
January	48.2	47.7	↓	47.6	↓	44.6	↓
February	48.3	47.5	↓	46.8	↓	48.6	↑
March	50.1	45.4	↓	47.3	↑	46.5	↓
<b>4<sup>th</sup> qtr</b>							
<b>Yearly Total</b>	<b>47.0</b>	<b>45.8</b>	↓	<b>45.6</b>	↓	<b>45.6</b>	→

During 2006/07, when the reporting of domestic violence to the police was at a peak, the repeat victimisation rate was 47%. During 2009/10, the repeat rate is 45.6; the same as the previous year, but during 2008/09 there were fewer incidents report. Increasing first time reporting whilst reducing repeat victimisation provides evidence that more victims are seeking assistance, while fewer are experiencing repeat incidents.

**Figure 4: Repeat Incident Rates by Year (%)**



A number of initiatives have been implemented across the district during 2008 and 2009 to increase reporting of domestic violence and to improve responses to victims of domestic violence. These have included, two awareness raising campaigns held during 2007, the implementation of Independent Domestic Violence Advisors and Multi-Agency Risk Assessment Conferences, setting up of Specialist Domestic Violence Courts. As can be seen in the above figure, the trend lines show that although there have been some peaks in the repeat incident rate during 2009/10, the overall trend is less steep than in the previous years (the trend line for 2008/09 is identical to 2009/10, but this was based on fewer incidents reported to the police), showing that there has been great improvements in the repeat victimisation rate, particularly since 2006/07.

**Table 6: Victim Ethnicity (% rounded)**

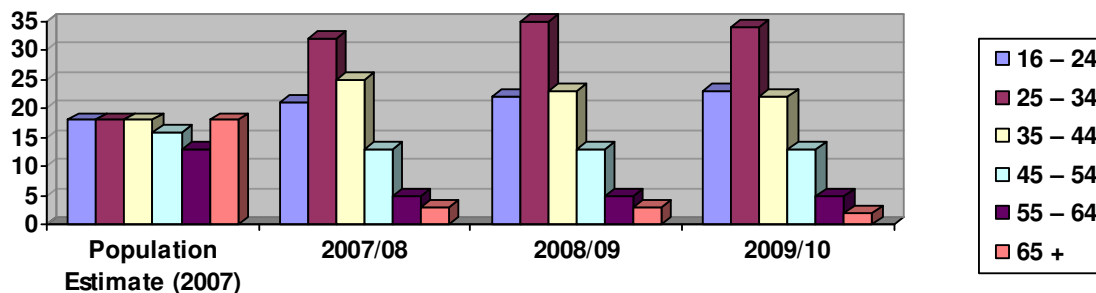
Ethnicity	Pop estimate 2006	2004/05	2005/06	2006/07	2007/08	2008/09	2209/10
Asian Other	0.8	1.3	1.2	0.7	0.8	0.7	0.9
Bangladeshi	1.2	0.5	0.5	0.3	0.6	0.8	0.9
Indian	2.9	1.4	1.9	1.7	1.6	1.5	1.5
Pakistani	15.6	14.2	14.1	15.6	15.4	16.6	16.3
<b>Asian sub-total</b>	<b>20%</b>	<b>17%</b>	<b>18%</b>	<b>18%</b>	<b>18%</b>	<b>20%</b>	<b>20%</b>
Black Other	0.1	0.1	0.1	0.1	0.1	0.1	0.0
Black African	0.8	0.8	0.6	0.4	0.4	0.6	0.5
Black Caribbean	0.7	1.6	1.5	1.2	1.1	1.1	0.9
<b>Black sub-total</b>	<b>2%</b>	<b>2%</b>	<b>2%</b>	<b>2%</b>	<b>2%</b>	<b>2%</b>	<b>1%</b>
White Other	2.1	0.6	1.0	1.2	1.5	2.5	1.6
White British	72.2	79.0	77.0	76.4	76.2	76.9	74.5
White Irish	0.7	0.5	0.3	0.5	0.5	0.5	0.3
<b>White sub-total</b>	<b>72%</b>	<b>80%</b>	<b>78%</b>	<b>78%</b>	<b>78%</b>	<b>77%</b>	<b>76%</b>
Dual heritage other	0.3	0.1	0.2	0.2	0.2	0.1	0.2
White/Asian	0.8	0.3	0.6	0.5	0.6	0.7	0.8
White/Black African	0.2	0.0	0.2	0.3	0.1	0.3	0.2
White/Black Caribbean	0.6	0.6	0.7	0.7	0.8	0.7	1.3
<b>Dual heritage sub-total</b>	<b>2%</b>	<b>1%</b>	<b>2%</b>	<b>2%</b>	<b>2%</b>	<b>2%</b>	<b>2%</b>

There has been a consistent change in the ethnicity of victims reporting domestic abuse to the police since 2004/05, with an increase in the percentage of victims women reporting domestic abuse being Asian (17% to 20%) and a decrease in the percentage of victims being of white ethnic origin (80% to 76%).

**Table 5: Reported Incidents by Victim Age (where age is known)**

	Population Estimate (2007)	2007/08	2008/09	2009/10 (8 months)
16 – 24	67,700 18%	1,779 21%	1,665 22%	1,817 23%
25 – 34	69,100 18%	2,710 32%	2,660 35%	2,656 34%
35 – 44	69,900 18%	2,067 25%	1,766 23%	1,765 22%
45 – 54	61,000 16%	1,085 13%	988 13%	1,018 13%
55 – 64	49,800 13%	429 5%	386 5%	391 5%
65 +	67,900 18%	275 3%	223 3%	184 2%
<b>Total</b>	<b>385,400</b>	<b>8,345</b>	<b>7,688</b>	<b>7,831</b>

% rounded up to nearest whole.

**Figure 5: Age of Victim by Year (percentage)**

The percentage of victims under 35 years of age increased from 54% in 2007/08 to 56% in 2008/09 and in 2009/10, 58% of victims were under 35 years of age. The percentage of victims aged between 16 and 24 years increased from 21% in 2007/08 to 22% in 2008/09 and in 2009/10, 23%. This compares with 18% of the districts population being in this age range.

## Children and Domestic Violence

**Table 7: Number of Incidents where Children Present**

	Airedale / Bradford North 2008/09	Airedale / Bradford North 2009/10	Airedale / Bradford North 08/09 to 09/10	Bradford South 2008/09	Bradford South 2009/10	Bradford South 08/09 to 09/10
April	119	106	↓ 15	147	158	↑ 11
May	98	140	↑ 42	171	169	↓ 2
June	120	127	↑ 7	201	170	↓ 31
July	111	150	↑ 49	180	141	↓ 39
August	108	147	↑ 39	177	170	↓ 7
September	104	117	↑ 13	179	162	↑ 19
October	98	113	↑ 15	181	149	↓ 32
November	107	115	↑ 7	159	137	↓ 22
December	122	142	↑ 20	184	168	↓ 16
January	113	126	↑ 13	191	152	↓ 39
February	87	96	↑ 9	133	154	↑ 21
March	106	108	↑ 2	144	126	↓ 18
<b>Total</b>	<b>1,293</b>	<b>1,487</b>	<b>↑ 194</b>	<b>2,047</b>	<b>1,856</b>	<b>↓ 191</b>

During 2008/09, across the district there were 3,340 domestic violence incidents where children were present. This is 45% of the total number of incidents reported to Bradford Police. The total number of children recorded as being present at incidents during this 12-month period was 6,090. As the repeat incident rate across the District was 45%, these incidents are likely to have involved approximately 3,000 individual children.

During 2009/10, there were 3 more incidents reported to the police across the district where children were present (3,340 incidents in 2008/09 and 3,343 incidents in 2009/10). However, there was an increase of 194 incidents in Airedale / Bradford North division and a decrease of 191 incidents in Bradford South division.

During 2008/09 there were 6,090 children present at incidents reported to the Police. During the same 2009/10 there were 6,177 children present at incidents reported to the Police; an increase of 87 children. Therefore there appears to be little change in the number of children present at incidents reported to the Police.

<p>Val Balding Safer Communities Lead Officer (Violent Crime) 01274 434229</p>
--